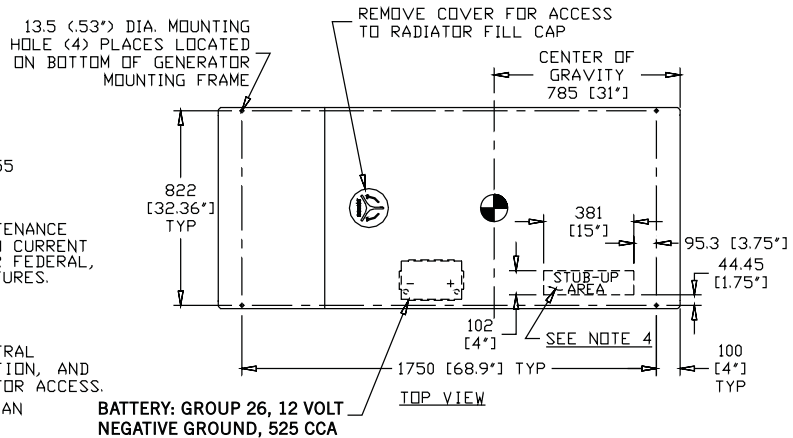


| WEIGHT DATA  |                 |
|--|-----------------|
| 2.4L 35KW  | 632KG (1393 LB) |
| 2.4L 45KW  | 641KG (1414 LB) |
| WOODEN SHIPPING SKIDS INCREASE OVERALL WEIGHT - 42KG (98 LB) |                 |

**NOTES:**

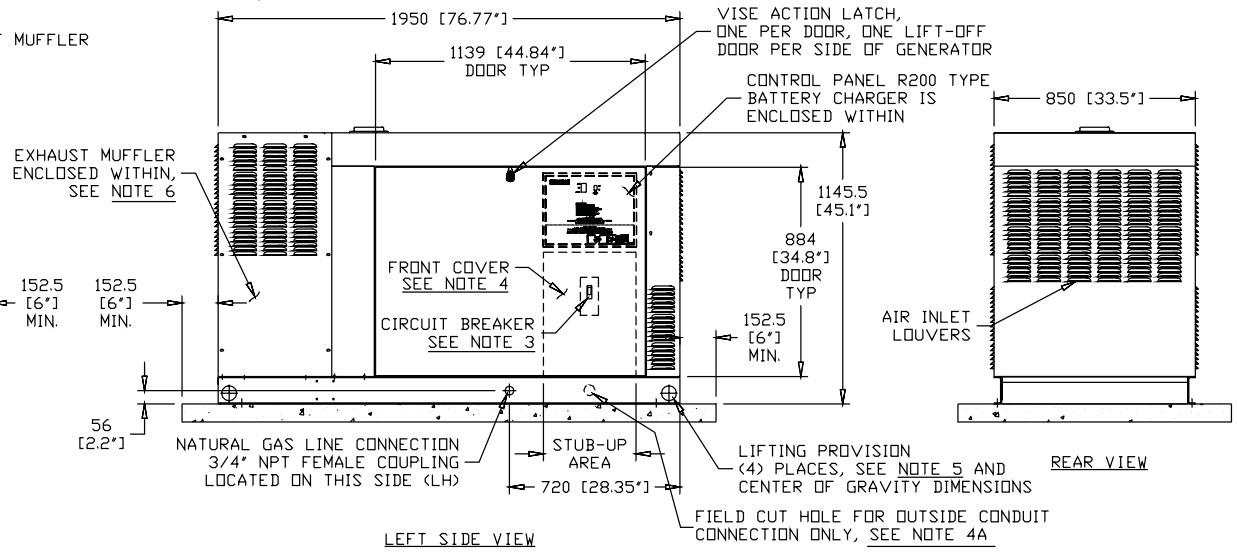
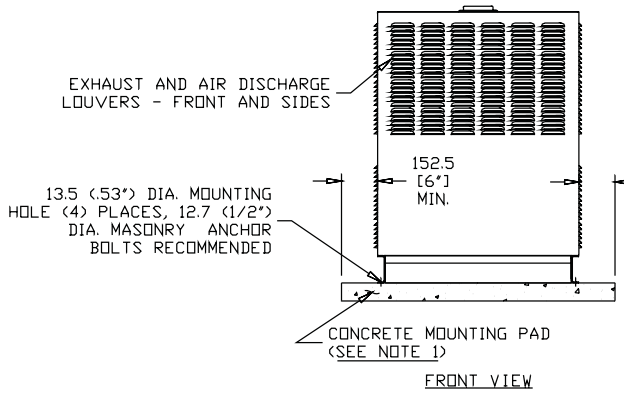
- 1) MINIMUM RECOMMENDED CONCRETE PAD SIZE: 1155 (45.5') WIDE X 2255 (88.8') LONG. REFERENCE INSTALLATION GUIDE SUPPLIED WITH UNIT FOR CONCRETE PAD GUIDELINES.
- 2) ALLOW SUFFICIENT ROOM ON ALL SIDES OF THE GENERATOR FOR MAINTENANCE AND SERVICING. THIS UNIT MUST BE INSTALLED IN ACCORDANCE WITH CURRENT APPLICABLE NFPA 37 AND NFPA 70 STANDARDS AS WELL AS ANY OTHER FEDERAL, STATE AND LOCAL CODES FOR MINIMUM DISTANCES FROM OTHER STRUCTURES.
- 3) CIRCUIT BREAKER INFORMATION: SEE SPECIFICATION SHEET WITHIN OWNERS MANUAL
- 4) INSIDE STUB-UP AREA FOR AC LOAD LEAD CONDUIT CONNECTION, NEUTRAL CONNECTION, BATTERY CHARGER 120 VOLT AC (< 5 AMP MAX.) CONNECTION, AND ACCESS TO TRANSFER SWITCH CONTROL WIRES. REMOVE FRONT COVER FOR ACCESS.
- 4A) FIELD CUT HOLE IS ONLY REQUIRED FOR MOUNTING OF GENERATOR ON AN EXISTING PAD.
- 5) REFERENCE OWNERS MANUAL FOR LIFTING WARNINGS.
- 6) REMOVE EITHER LEFT OR RIGHT HAND SIDE PANEL TO ACCESS EXHAUST MUFFLER AND FAN BELT.



BATTERY: GROUP 26, 12 VOLT  
NEGATIVE GROUND, 525 CCA

| SERVICE ITEM ACCESSIBILITY CHART |                 |
|----------------------------------|-----------------|
| SERVICE ITEM                     | 2.4L            |
| OIL FILL CAP                     | EITHER DOOR     |
| OIL DIP STICK                    | THRU RIGHT DOOR |
| OIL FILTER                       | THRU RIGHT DOOR |
| OIL DRAIN HOSE                   | THRU RIGHT DOOR |
| RADIATOR DRAIN HOSE              | THRU LEFT DOOR  |
| AIR CLEANER ELEMENT              | EITHER DOOR     |
| SPARK PLUGS                      | THRU RIGHT DOOR |
| MUFFLER                          | SEE NOTE 6      |
| FAN BELT                         | SEE NOTE 6      |
| BATTERY                          | THRU LEFT DOOR  |

REFERENCE OWNERS MANUAL FOR PERIODIC REPLACEMENT PART LISTINGS



**INSTALLATION DRAWING**  
**35kW & 45kW**  
**2.4 LITER IN-LINE 4 CYLINDER**  
**NATURALLY ASPIRATED ENGINE**

**#0G0325-B**