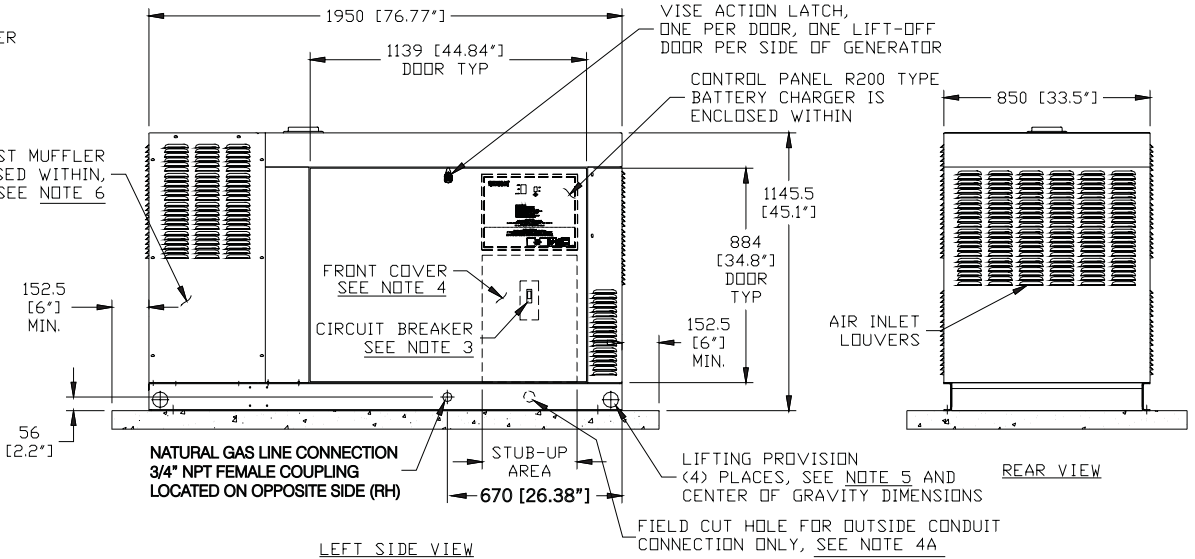
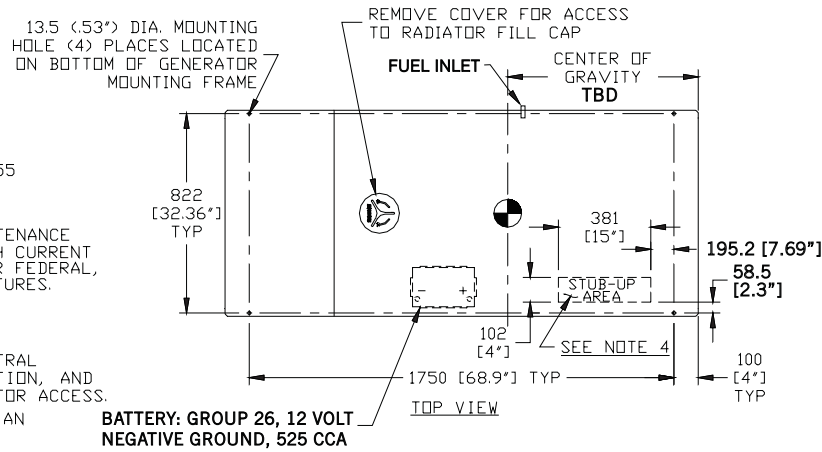
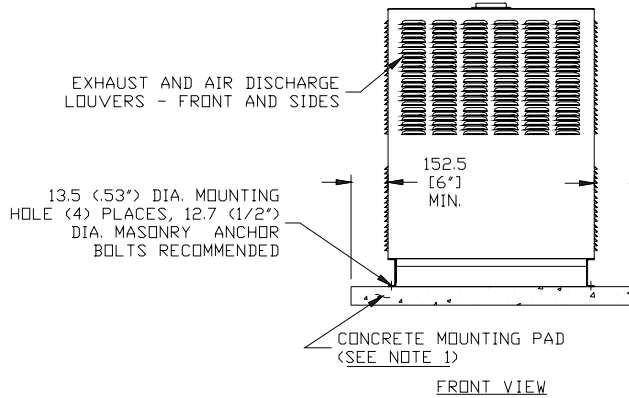


WEIGHT DATA	
<b>TBD</b>	
WOODEN SHIPPING SKIDS INCREASE OVERALL WEIGHT - 42KG (98 LB)	

**NOTES:**

- 1) MINIMUM RECOMMENDED CONCRETE PAD SIZE: 1155 (45.5') WIDE X 2255 (88.8') LONG. REFERENCE INSTALLATION GUIDE SUPPLIED WITH UNIT FOR CONCRETE PAD GUIDELINES.
- 2) ALLOW SUFFICIENT ROOM ON ALL SIDES OF THE GENERATOR FOR MAINTENANCE AND SERVICING. THIS UNIT MUST BE INSTALLED IN ACCORDANCE WITH CURRENT APPLICABLE NFPA 37 AND NFPA 70 STANDARDS AS WELL AS ANY OTHER FEDERAL, STATE AND LOCAL CODES FOR MINIMUM DISTANCES FROM OTHER STRUCTURES.
- 3) CIRCUIT BREAKER INFORMATION: SEE SPECIFICATION SHEET WITHIN OWNERS MANUAL
- 4) INSIDE STUB-UP AREA FOR AC LOAD LEAD CONDUIT CONNECTION, NEUTRAL CONNECTION, BATTERY CHARGER 120 VOLT AC (.5 AMP MAX.) CONNECTION, AND ACCESS TO TRANSFER SWITCH CONTROL WIRES. REMOVE FRONT COVER FOR ACCESS.
- 4A) FIELD CUT HOLE IS ONLY REQUIRED FOR MOUNTING OF GENERATOR ON AN EXISTING PAD.
- 5) REFERENCE OWNERS MANUAL FOR LIFTING WARNINGS.
- 6) REMOVE EITHER LEFT OR RIGHT HAND SIDE PANEL TO ACCESS EXHAUST MUFFLER AND FAN BELT.



SERVICE ITEM ACCESSIBILITY CHART

SERVICE ITEM	4.2L
OIL FILL CAP	TBD
OIL DIP STICK	TBD
OIL FILTER	TBD
OIL DRAIN HOSE	TBD
RADIATOR DRAIN HOSE	TBD
AIR CLEANER ELEMENT	TBD
SPARK PLUGS	TBD
MUFFLER	TBD
FAN BELT	TBD
BATTERY	TBD

REFERENCE OWNERS MANUAL FOR PERIODIC REPLACEMENT PART LISTINGS



PRELIMINARY

**INSTALLATION DRAWING**  
 35kW & 45kW  
 4.2 LITER V-6  
 NATURALLY ASPIRATED ENGINE

0G5868



ISSUE DATE 00/00/07